

ROWAN COMMUNITY MUSIC SCHOOL ANNUAL REPORT 2021



WWW.GO.ROWAN.EDU/COMMUNITYMUSIC

LETTER FROM THE DIRECTOR



Dear Rowan Community Music School Friends,

Welcome to Rowan Community Music School's first Annual Report!

We are excited to present an overview of our accomplishments from the 2020-2021 year. Read on for some highlights of what we've accomplished in a super busy year, and visit our [website](#) to learn about new fall programming!

The Rowan Youth Orchestra with Dr. Hayden Denesha made the most of the virtual setting with a fabulous 3-week residency with Urban Playground Chamber Orchestra featuring Lady Jess, Hassan Anderson, and Kyra Sims teaching creativity and improvisation with the students. Students found their voice by creating new pieces and exploring musical ideas.

We were proud to co-host cello-day featuring Yumi Kendall (masterclass) of the Philadelphia Orchestra and Dr. Andrea Kleesattel to learn about the intersection of the Dalcroze movement and cello playing.

The Rowan Youth Jazz Orchestra directed by Skip Spratt was launched! With 33 high school members, we commissioned the world premiere of a new work by noted composer and Rowan Faculty member Ed Vezinho. On top of all that, we certified 91 teachers in First Steps in Music Early Childhood training with Dr. Missy Strong.

Our partnership with Coles Music expanded Digital Audio Workspace with Professor Ben Runyan, educating 23 teachers over 5 weeks for free in Pro Tools and Logic this past spring. Thank you, Coles Music!

We are excited for the return to in-person programming at Rowan Community Music School, and so proud of what we accomplished in 2020-2021. Turn the page to learn more about the wonderful achievements of our students, faculty, and staff this year, and learn about the impact our school has on southern New Jersey and beyond.

Sincerely,

A handwritten signature in black ink, appearing to read 'E M Guerriero'.

Elizabeth M. Guerriero, Ph. D.
Director, Rowan Community Music School
& Educational Partnerships

CMS VISION AND PROGRAMS

Transforming our community through high-quality music for all.



"Advocate for the role of classical music for everyone. Classical music is for everyone. Music education is for everyone. Music education is about reaching the whole person through music."

Hassan Anderson, Urban Playground Chamber Orchestra,
University of South Carolina



Ensembles



Classes



**Individual
Instruction**



**Professional
Development**

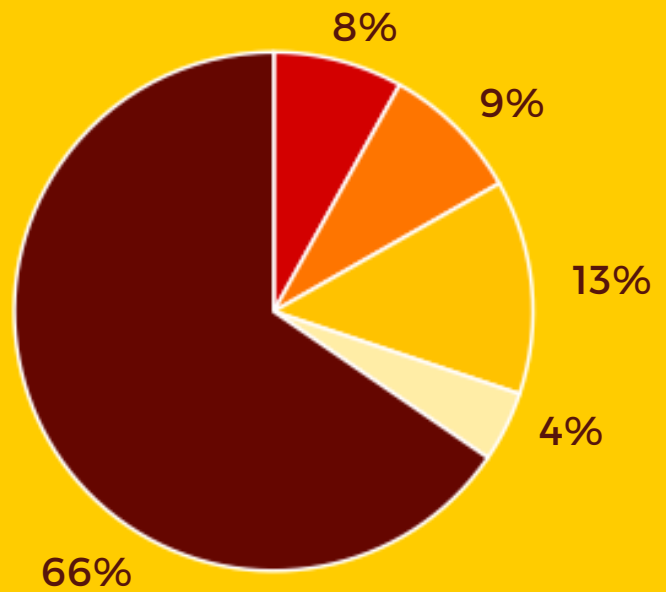
THE 4 PILLARS OF LEARNING

The Rowan Community Music School has 4 pillars that encompass the ways in which people learn and grow in music: Ensembles, Classes, Individual Instruction (i.e. Private Lessons), and Professional Development.

Go to go.rowan.edu/CMSvideo for a full Introduction to the Rowan Community Music School!

PROGRAMS BY THE NUMBERS

Total Participants



PARTICIPANTS SERVED

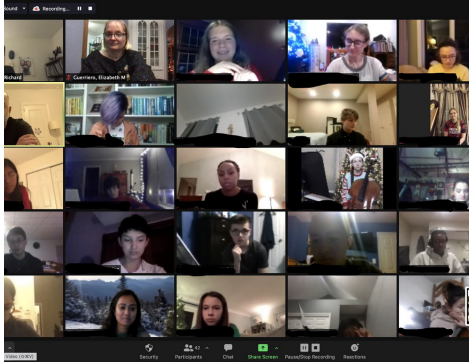
Category	Total Participants
Ensembles	116
Classes	125
Private Lessons	192
Summer Programming	63
Professional Developments and Events	940
Grand Total	1451



We were thrilled to host 38 participants in the Virtual Music Technology & Music Business Camp, an effort in which we supported the music department.

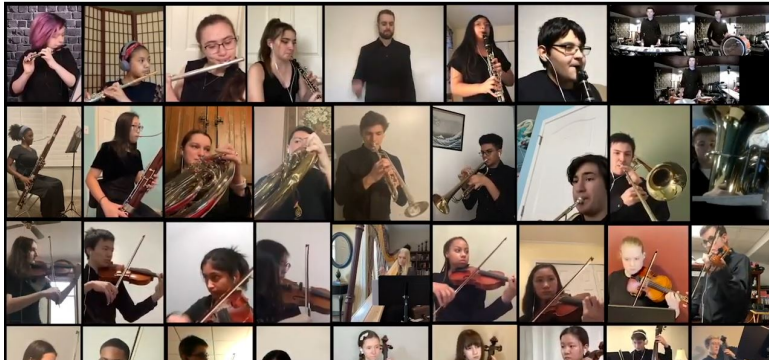
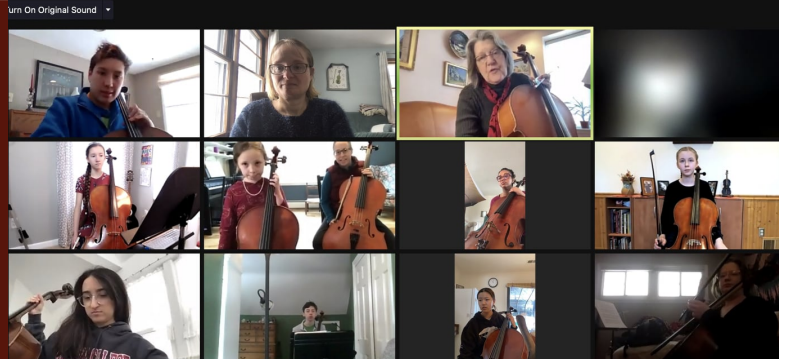
MEASURING OUR IMPACT

Free for students, observable by all.



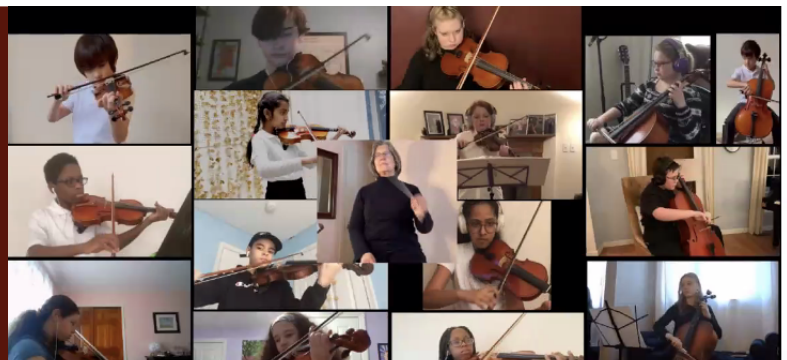
Pictured is RYO with special guest artist Maestro Ankush Bahl from the Omaha Symphony.

Pictured to the right is Rowan CMS' Virtual Cello Day with Yumi Kendall and Dr. Andrea Kleesattel. Their session had 32 participants!



Pictured to the left is the virtual concert of the RYO. The two virtual ensemble concerts had a grand total of 371 participants! Bravo Rowan CMS Youth Ensembles!

Pictured to the right is the Rowan CMS 2021-2022 Program Reveal Event. This event had 42 participants!



MEASURING OUR IMPACT

Enriching, high quality teaching and learning.

This year, we awarded 12 Ensemble Scholarships to support our students!
We also had 23 teachers attend the FREE 5-hour Professional Development sessions, sponsored by **COLES MUSIC.**

We have 72 faculty members here at Rowan CMS, including Rowan University faculty, Community faculty, coaches and assistants, and we grew from 2 to 3 part-time staff members!

Rowan University Voice Professors: Marian Stieber, Lourin Plant, and Lauren Athey-Janka in their Vocal Masterclass. This session had 12 participants!



A FREE Woodwinds Masterclass taught by Guest Artist from Coastal Carolina University, Dr. Eric Schultz. Pictured are Dr. Schultz and our selected students!



"Teaching is the most rewarding job. Watching a student's face light up when they enjoy what they are learning is one of the most gratifying feelings I could possibly experience. But what makes it exceptional is that I get to learn as much from my students as they learn from me."

Veronica Menna,
Rowan CMS
Clarinet Teacher

ADVISORY COUNCIL

We are thankful to the Rowan Community Music School Advisory Council for their time, energy, enthusiasm, and generous financial support!



“The joy of practicing a musical instrument or singing can begin at any age. I encourage students of all ages and levels of experience to explore music with the help of all the excellent, patient and talented instructors at the Rowan CMS. Learning to play and read music is like learning a new, beautiful and intriguing language that you can embrace, master technique and share your entire life.”

**Skeffington Thomas, Rowan Advisory Council
Member, Rowan University Art Department
Professor & Chair**

Paul Babcock
MacPhail Center for Music

Barbara Chamberlain
Board of Trustees, Rowan University

Lauralee Houghton & Russ Coleman
Coles Music

Richard Dammers
Dean of the College of Performing Arts and Professor of
Music Education, Rowan University

Denis DiBlasio
Executive Director of the Maynard Ferguson Institute of
Jazz at Rowan University; Full Professor and Director of the
Jazz Performance and Composition Programs,
Rowan University

Robert Ferguson
Stockton University of New Jersey

Naomi Gonzalez
Mann Center for the Performing Arts

Richard Lin
Children's Hospital of Philadelphia (CHOP)

Betsy Maliszewski
West Orange Public Schools

Michael McArthur
Assistant Professor of Music Business, Rowan University

Siiyara Nelson
Cinnaminson School District

Lori Petronglo
EXIT Realty, Greater Vineland Chamber of Commerce

Christopher Roche
Associate Professor in the Department of Theatre and
Dance, Rowan University

Skeffington Thomas
Art Department Professor and Chair, Rowan University

Paule Turner
Theatre and Dance Associate Professor and Chair, Rowan
University

Elizabeth M. Guerriero
Director of Community Music School and Educational
Partnerships, Rowan University

COMMUNITY MUSIC SCHOOL CONTRIBUTORS

JULY 1, 2020 – JUNE 30, 2021

\$1,000 - \$4,999

Houghton Music LLC
Matthew Potts

\$500 - \$999

Barbara Chamberlain '88

\$100 - \$249

Anonymous Donor
Olalekan Akinyanmi
David and Kristin DiAmore
Joanne Erwin
Thomas '79 and Betsy Maliszewski '79
George Melas-Kyriazi
Christopher Tallarida
Skeffington Thomas
Veda Zuponcic

\$0 - \$99

Norman and Carolee Angell
Sally Atkins
Katya Barmotina
Dolores Bathurst '95
Jason and Janet Borowski
Bristol-Myers Squibb Foundation, Inc.
Mimi Butler
Rick Dammers
Julia Danitz
Mark Dishong
Robert Ferguson
Elizabeth Guerriero
James Guerriero
Nancy Cohen Haimi
Megan Heber '08
Christopher Hochstuhl
Patricia Hochstuhl
Karen Huston
Thomas and Pat Levecchia
Edward and Louise McClure
Rachel Michel '09
Dexter and Laurie Monroe
Susan M'96 and Daniel Murphy M'97
Diane Potts
Karen Potts
Kevin Potts
Will Powell '05
Aish Sami
Mark Snyder
Linda Wagner
Kathleen Wetherington M'05
Samuel Young
Amy Zakar-Banner

THANK YOU TO OUR DONORS!

Music is a fundamental right and every student
deserves the opportunity to have access to the
highest quality arts education.
Your donations allow us to pursue our goal of
bringing music to the community.

MAKE A GIFT TODAY AT:

go.rowan.edu/donate



"Because of the amazing and quite accomplished staff encouraging me to do my best and to not let my mistakes define me, my self-esteem increased. This also caused my dedication, development, and performance quality to increase as well."

Adrian Antonio Ferrer, Rowan Youth Orchestra Student and Ensemble Scholarship Recipient



COMMUNITY MUSIC SCHOOL

Annual Report Graphic Design by Mimi Laws
Rowan Community Music School Social Media, Marketing, and Development Assistant

Rowan Community Music School College of Performing Arts

Wilson Hall Room 241

201 Mullica Hill Road

Glassboro, NJ 08028

Phone: 856-430-2697

go.rowan.edu/communitymusic

